

5.5 Acres on US 19 @ McKinley in Homosassa

0 Suncoast Boulevard, Homosassa, FL 34443

Listing ID: 2114406
Property Type: Vacant Land For Sale
Possible Use(s): Mobile Home Park, Multi-Family
Sale Price: \$165,000
Unit Price: \$30,000.00 Per Acre
Land Available: 5.5 Acres
Sale Terms: Cash to Seller



Property Overview

5.5 ACRE CORNER LOT WITH FRONTAGE ON FOUR ROADS TOTALING 1,570 FEET MOL. Highway cut allowing North & South access on U.S. Hwy 19. 12 minutes from State Road 589 (Suncoast Pkwy) direct to Tampa. Some uses allowed: Four residential units per acre, mobiles ok, Home Occupations, Educational & Day Care Centers, Churches, Professional Offices, Personal Services, Retail Sales, Strip Centers, Convenience Stores & Light Mechanical Repair Shops. MANY POSSIBILITIES. SUPERB LOCATION. GREAT PRICE.

Property Details

General Information

Listing Name:	5.5 Acres on US 19 @ McKinley in Homosassa	Zoning:	(Mixed) Commercial, Mobile Home, Multi-Residential or Single-Family
Tax ID Number/APN:	1155487	Land Area:	5.50 Acres
Possible Use(s):	Mobile Home Park, Multi-Family, Office, Retail, Self Storage	Gross Land Area - Minimum:	
		Sale Price:	\$165,000
		Sale Terms:	Cash to Seller

Area & Location

Side of Street:	West	Legal Description:	Lengthy Metes and Bounds. Call listing agent.
Road Type:	Highway	Street Name:	Suncoast Highway (US 19)
Property Visibility:	Excellent	Feet of Frontage:	156

Land Related

Lot Frontage (Feet):	1,570
Lot Depth:	660

Easements/Encumbrances Description: Billboard on property with Lease through 6/12/2011 with auto-renewal unless cancelled by written notice from lessor or lessee 90 days before end of lease term. Pays \$2,000 per year. Covers present real estate property taxes of \$1,848.51 per year.

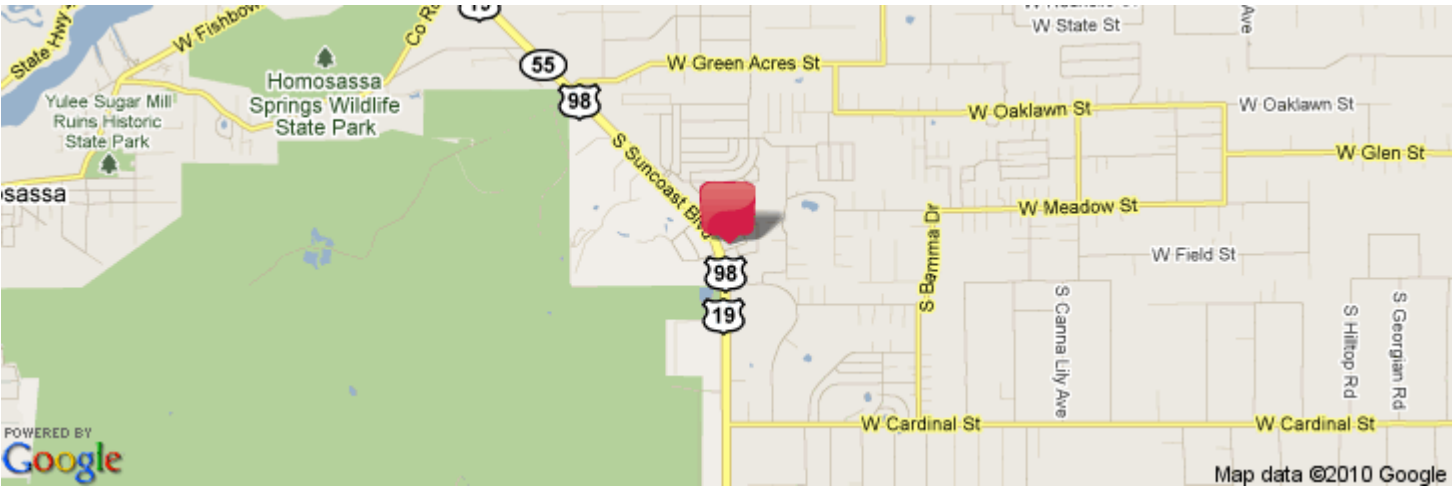
Available Utilities: Electric

Financial

Assessment Year: 2009 Real Estate Taxes - \$1,848.51
Assessed Value - Total(\$): \$114,920 Annual(\$):

Location

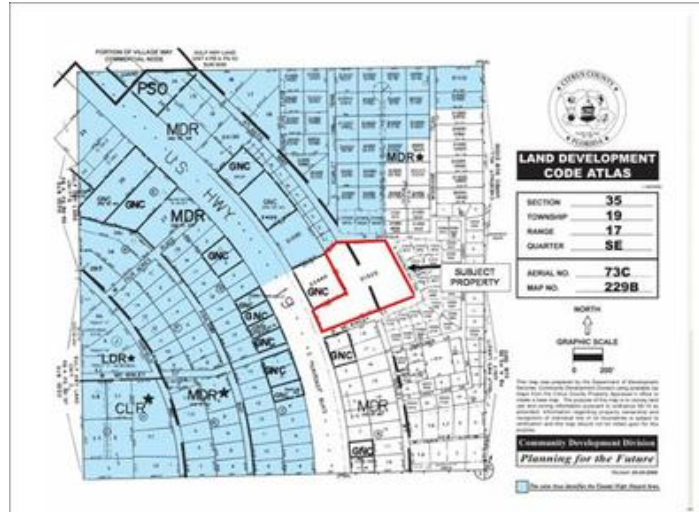
Address: 0 Suncoast Boulevard County: Citrus
Homosassa, FL 34443 MSA: Homosassa Springs



Property Images



Parcel_Map__Small_



LDC_MAP__Small_

Property Contacts



Lillian Wilson
RE/MAX REALTY ONE
1100 W Main St
Inverness, FL 34450
(352) 637-6200
lillianwilson@remax.net